

# MAKING ROOM

New Hemlock Lodge

*"I had no  
idea there was  
a God who  
created me  
and loved me  
like this."*

Summer 2023  
Camper

Will you join us in making room for every camper  
to hear the message of God's love?



# Room to Grow

**Covenant Point is a place of wholeness.** We want every camper and guest to know that there is a place for them at camp. They belong, and here they can experience the kind of wholeness God provides in Jesus Christ. Expanding our space for sleeping and gathering in a new lodge allows us to extend our welcome, inviting more people to find a place to belong, more people to taste what a full, whole life in Jesus offers.

As several of our key programs are growing, Hemlock Lodge will be a significant addition to our ability to extend this welcome. Updates to the adjacent Aspen and Birch lodges will equip us to offer a trio of fresh housing options. Specifically, we will be better able to keep pace with ministry growth, extend hospitality to guest groups, respond to changing camper and guest expectations, provide for increased needs for summer staff housing and expand accessible lodging. We are making room at camp!

## Hemlock Lodge

- Adds 24 new beds, increasing capacity to 234 beds
- Is fully ADA accessible
- Includes two large sleeping areas, each with a full bathroom
- Features a large, open, vaulted, covered front porch, expansive windows and a shared lounge with fireplace
- Matches nearby Aspen and Birch lodges in architecture and style
- Is named for a native, coniferous tree that is common on Covenant Point's Island

## Complete Project

- Moving Tall Trees, a small cabin, elsewhere to create space for Hemlock
- Upgrading Aspen and Birch lodges with remodeled bathrooms, new fireplaces, carpet and front porches that match Hemlock's
- Funding Covenant Point's maintenance endowment fund, covering depreciation costs for all three lodges

## Project Budget

Through God's provision and generous donors, more than two-thirds of the \$600,000 project budget has been raised. **With only \$150,000 left to raise, we invite your participation in Making Room for more campers and guests at Covenant Point.**



## Project Values

Aligned with Covenant Point's master plan, the Hemlock Lodge project honors the values set for future building projects.



**Sustainable.** Energy efficient. Building materials conducive to maintenance. Right-sized.



**Outdoors-in and Indoors-out.** Beautiful views from indoors; maximum interaction with the outdoors. Natural construction materials to bring outdoor aesthetics inside.



**Simple.** Comfortable, warm, visually appealing. Not extravagant. Conducive to reflection, play, rest. Noise reduction between spaces. Easy for guests to use without explanations.



**Multi-use.** Suited to serve a variety of groups, ages, purposes. Right-sized for current and future mix of adult/youth/family lodging needs.



**Supervision.** Minimize areas that would be difficult to ensure safe camper interaction with one another, staff and outdoors.



**Connection.** Design that is conducive to community, spiritual formation, healthy interaction.

# MAKING ROOM

## New Hemlock Lodge



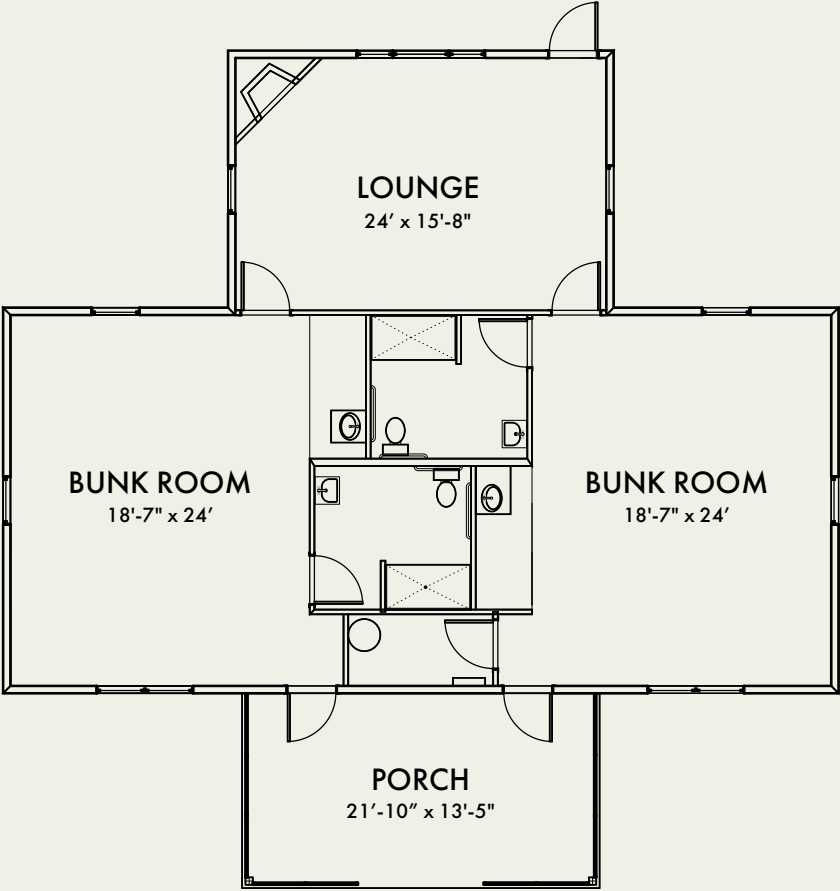
**Front view**



**Back view**

Identical porches will be added to Aspen and Birch Lodges.

Interior Floor Plan



# Financial Plan



**Total project cost: \$600,000**

## **Hemlock Lodge: \$492,000**

Construction, Site, Architectural	\$385,000
Furnishings	\$30,000
Contingency (10%)	\$38,500
Maintenance Endowment (10%)*	\$38,500

## **Aspen and Birch Lodges: \$108,000**

Porches	\$56,000
Bathrooms	\$20,000
Carpet	\$5,600
Refresh interiors, exteriors	\$8,400
Contingency (10%)	\$9,000
Maintenance Endowment (10%)*	\$9,000

\* Contributions of an additional 10% of the total cost of building Hemlock Lodge and of remodeling Aspen and Birch lodges will be placed in Covenant Point's maintenance endowment fund to ensure our ability to sustain care of the buildings.

## Construction Timeline

**Hemlock Lodge:** Moving of Tall Trees and site preparation begins in mid-August. Construction begins in late August, with anticipated completion in spring 2024.

**Aspen, Birch lodges:** Remodeling is expected to be completed by winter 2024 or early 2025.

Contributions received that exceed the needs of the Hemlock project will be directed toward our next major capital project.



*"I feel at  
home here.  
This place  
feels like  
home."*

Senior High  
Camper

## Your Invitation

### Will you help us make room for campers and guests?

Please join us in making room for more campers and guests. Your gift will support the new Hemlock Lodge and the remodeling of nearby Aspen and Birch lodges. These spaces of belonging invite campers and guests to feel welcome and at home so that their spirits might be open to the love of God shown in Jesus Christ.

Thank you for helping us fully fund the Making Room project and reaching our goal of \$150,000. You can make a gift by:

- Going to [cpbc.com/donate](https://cpbc.com/donate) and making a gift via PayPal, credit card or debit card. Please select Making Room Project in the "Use this donation for" drop down menu.
- **Return a Making Room reply card** using the pre-addressed envelope.
- **Mailing a check** to Covenant Point Bible Camp, Attn: Making Room Project.

**Questions?** Please contact Executive Director Erik Strom at 906.265.2117.



[cpbc.com](http://cpbc.com)

358 W Hagerman Lake Rd • Iron River, MI 49935 • 906.265.2117

